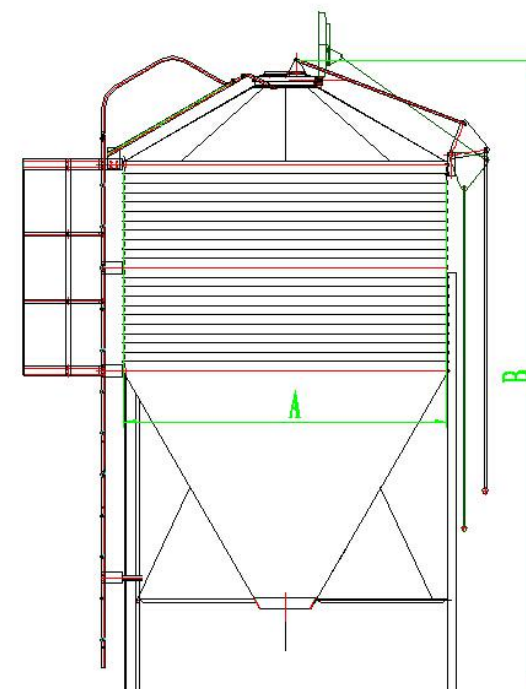
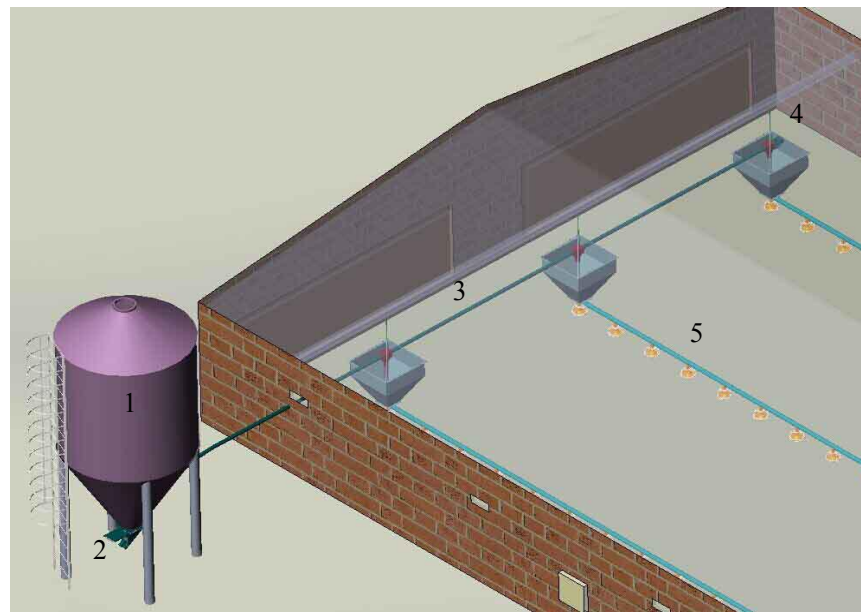


HENAN POUL TECH MACHINERY CO., LTD.

Silo and Auger Feeding System

- Feed Silo(* can design with pneumatic loading)
- Broiler feed line system



Auger Delivery System Technical Data

Type	pipe 75	Pipe 90
Conveying capacity(horizontal)	1400Kg/h	2500Kg/h
Max. conveying length	60m	50m
Gear motor	0.75Kw	0.75Kw
Detail of pipe	φ 75 mm*3.6mm	φ 90mm*4mm

Silo Specifications

Code No.	Volume (m3)	Height-B(m)	Diameter of the silo-A(m)
RF17801	3.90	3.36	1.78
RF17802	6.00	4.26	1.78
RF26502	16.06	5.6	2.65
RF26503	20.99	6.5	2.65
RF30504	34.78	7.6	3.05
RF36503	40	6.6	3.65
RF36504	49.2	7.5	3.65

1. Feed Silo . 2. Silo boot 3. Delivery system (pipe and auger) 4. Feed motor 5. Broiler feed line

General Assembling Drawing for Broiler Feed Line System

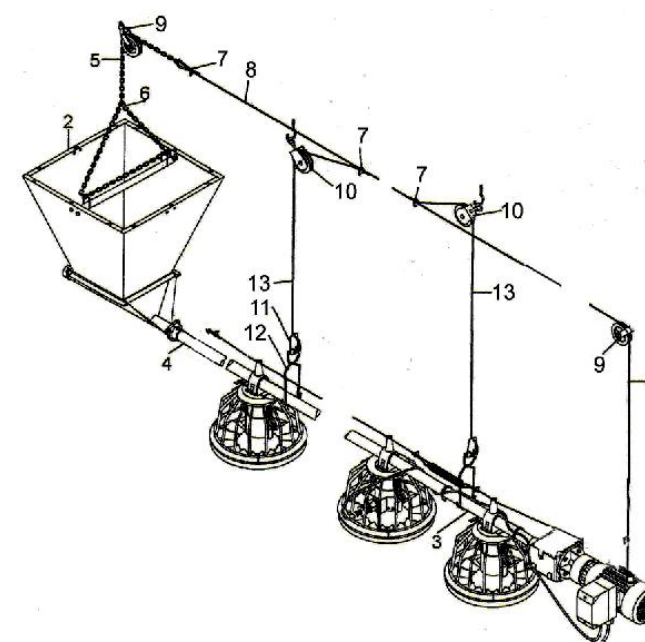
Feed Silo Detail



rubber cap
for bolts



Observation
Window



- 1.Motor 2.Hopper 3.End tube 4.Feed pipe with auger
5.Hanging chain 6.S hook 7.φ6 steel wire clip
8.φ5 steel wire 9.Pulley 105mm 10.Pulley 45mm
11.Cable lock 12. Pipe hanger
13. Steel wire 3mm



Broiler Feed Line System



HENAN POUL TECH MACHINERY CO., LTD.

-----Poultry Livestock Equipment and Solution Provider



Pan Feature

Pan diameter 330mm

Pan material: 100% virgin PE material

With anti- UV additive

Feed capacity: 55 birds/ pan

Pan bottom can use as starter pan

Pan use: starting from 1-day age.

Cleaning :hang dry, wash by high pressure water,

easy cleaning .

Bottom shape : wave-shape bottom and flat bottom are all available to choose.

Drive Motor

Power : 0.75KW

*we can customize for you

Delivery System

Feed pipe: Ø45mm *1.2mm thickness

Auger: Made in South Africa

Delivery :450Kg/h

ALL KINDS OF FEED PAN FOR YOUR CHOICES



OTHER SPARE PARTS AVAILABLE TO SUPPLY



Feed pipe & auger



Feed motor



Pulley



AUGERMATIC FEEDING SYSTEM

--SIMPLE AND RELIABLE

Company:Henan Poul Tech Machinery Co.,Ltd.

Tel/Fax:+86-(0)371-56797621

Address:ROOM NORTHEAST, 14FLOOR, NATIONAL UNIVERSITY TECH PARK, CHANGCHUN ROAD, ZHENGZHOU HIGH-TECH ZONE, HENAN, CHINA.

kevinpoultech@aliyun.com poultrycn@gmail.com Mobile:+8615515963558.

HENAN POUL TECH MACHINERY CO., LTD.

-----Poultry Livestock Equipment and Solution Provider



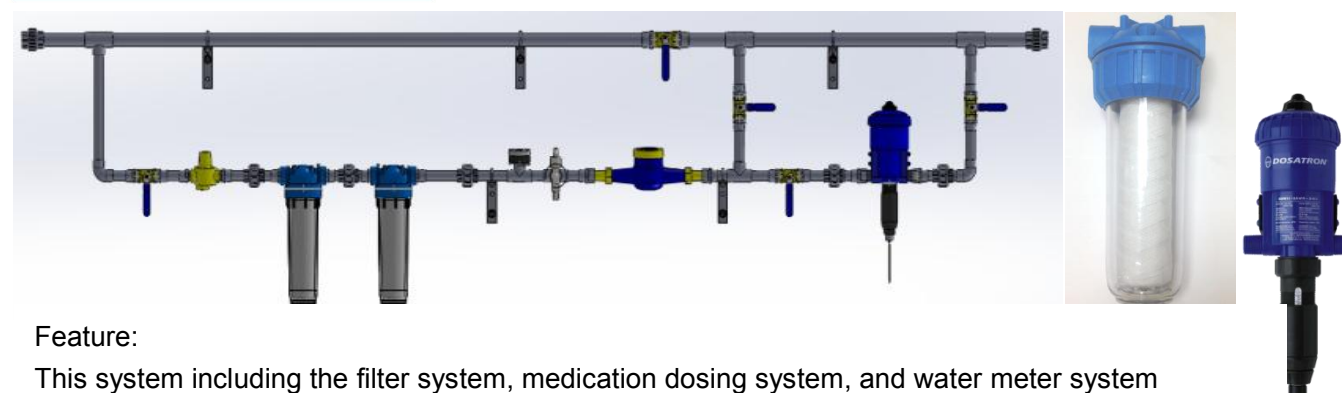
POULTECH DRINKING SYSTEM

Company: Henan Poul Tech Machinery Co., Ltd.

kevinpoultech@aliyun.com poultrycn@gmail.com Mobile: +8615515963558.

Address: ROOM NORTHEAST, 14 FLOOR, NATIONAL UNIVERSITY TECH PARK, CHANGCHUN ROAD, ZHENGZHOU HIGH-TECH ZONE, HENAN, CHINA.

Water Line Front Part



Feature:

This system including the filter system, medication dosing system, and water meter system

A: filter: 5 micro filtering protect the water line and nipple from blocking and leaking

B: All piping and valves are included in the package

Pressure Regulator



Feature:

A: Adjusting the water pressure according to the bird age, easy to operate.

B: Display pipe is made by transparent soft material, convenient to observe water pressure and lift the water line during harvest

C: Simplified design, and easy to change from water drinking to flushing

Nipple Drinking System



Feature:

A: PVC pipe - 100% virgin material

B: Customize according to your need : 10 nipples/3m, 12 nipples/3m, 15 nipples/3m

C: Easy to install, the package including all accessory for hanging.



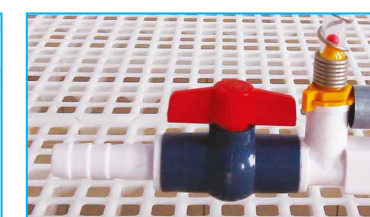
Broiler & Breeder Nipple



Impex nipple



Drinking cup



End kit

HENAN POUL TECH MACHINERY CO.,LTD.

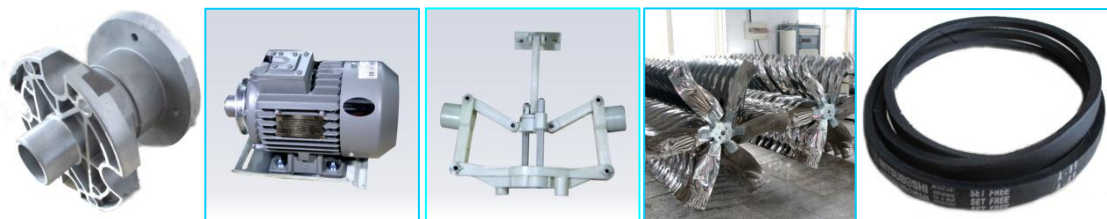
50 Inch Box Fan With Shutter



Feature:
Siemens Motor / China brand motor
Blade size: 1270mm
Fan box size : 1380* 1380mm
Fan capacity: 43000m3/h
Material for blade : stainless steel
Material for fan frame: hot galvanized sheet 275G
Back mesh: hot galvanized mesh
Shutter open type: central-fugal
Belt : MITSUBOSHI



Spare parts photo



Blade-pulley Motor Opening-system 6-complete blade Belt
---- Choose spare parts as you need.

50 Inch Hanging Fan



Feature:
Siemens Motor / China brand motor
Blade size: 1270mm
Fan box size : 1380* 1380mm
Fan capacity: 45890m3/h
Material for blade : stainless steel
Material for fan frame: hot galvanized sheet 275G
Belt : MITSUBOSHI
Note : your best choice for open-style house .
just hang in the house of poultry or cattle , easy
installation

Others Spare Parts For Ventilation



Rain Cover
Protecting your fan
against rain . Made by
fiber-glass material ,
anti-rust.



Trap
It can protect the
birds from sexually
precocious.
Made of plastic
sheets and
galvanized frame.



Curtain
It can protect the
cooling pad and
prevent the wind
entering the house
in the winter.

Performance Specifications



50"centrifuge fan 36"centrifuge fan 50"cone fan(butterfly) 50"cone fan(with shutter) 24"speed fan hanging fan

Serial No.	Product name	Diameter of blade	Voltage(v)	Current(A)	Power(kw)	Motor speed(r/m)	Air flow(0Pa-m³/h)	Noise (dB)	Installation dimension(mm)
BFS13010024	24"speed fan	630	220	2.7	0.37	930	0-10800	70	785x785
BFS1301036B	36"centrifuge fan	910	380	1.6	0.4	1400	20800	60	1020x1020
BFS1301050B	50"centrifuge fan	1270	380	2.8	1.1	1400	43000	62	1420x1400
BFS1301036H	36"hanging fan	910	380	1.6	0.4	1400	22900	60	1020x1020
BFS1301050H	50"hanging fan	1270	380	2.8	1.1	1400	45890	65	1420x1400
BFS1301050C	50"cone fan	1270	380	2.8	1.1	1400	49520	65	1420x1400
BFS1301050C	50"cone fan(with shutter)	1270	380	2.8	1.1	1400	43000	65	1420x1400

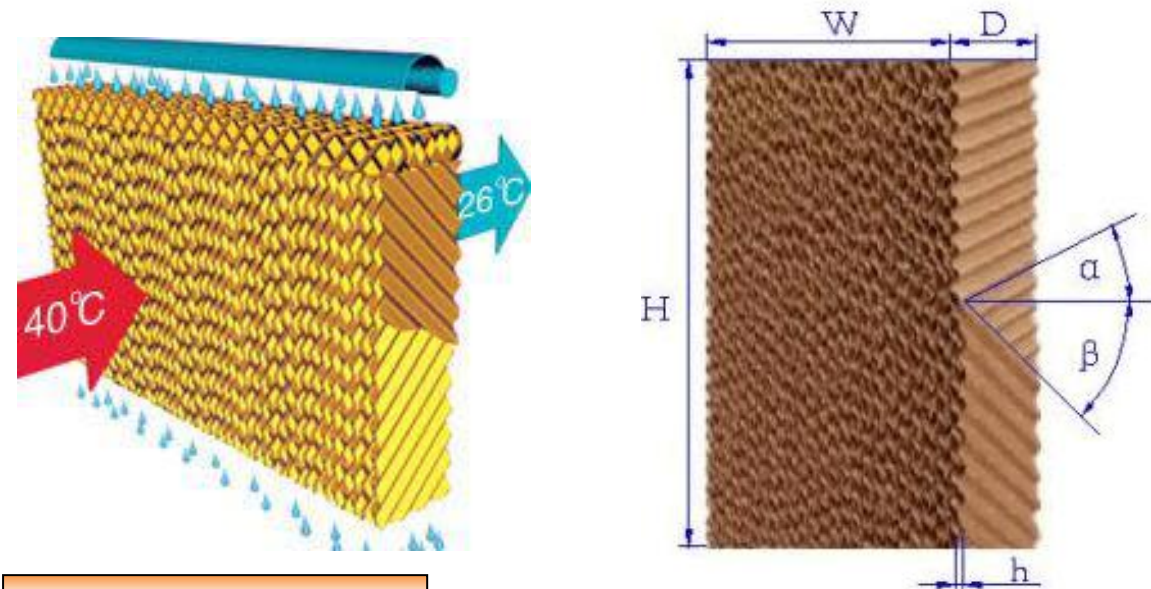
50 Inch Butterfly Cone Fan



Feature:
Siemens Motor / China brand motor
Blade size: 1270mm
Fan box size : 1380* 1380mm
Fan capacity: 49520m3/h
Material for blade : stainless steel
Material for fan frame: hot galvanized sheet 275G
Shutter open type: Butterfly
Belt : MITSUBOSHI



Cooling Pad System for Livestock and Industry



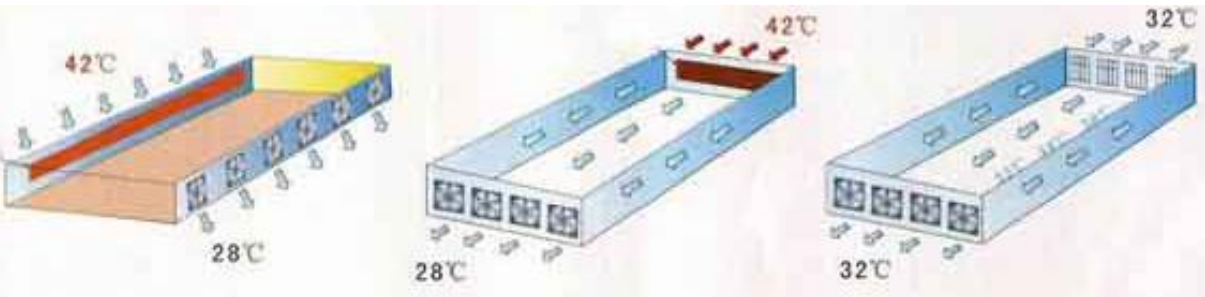
Cooling Pad Specifications

α	β	h	D	W	H
45	45	7	100/150	300/600	1500/1800/2000
45	15	7	100/150	300/600	1500/1800/2000

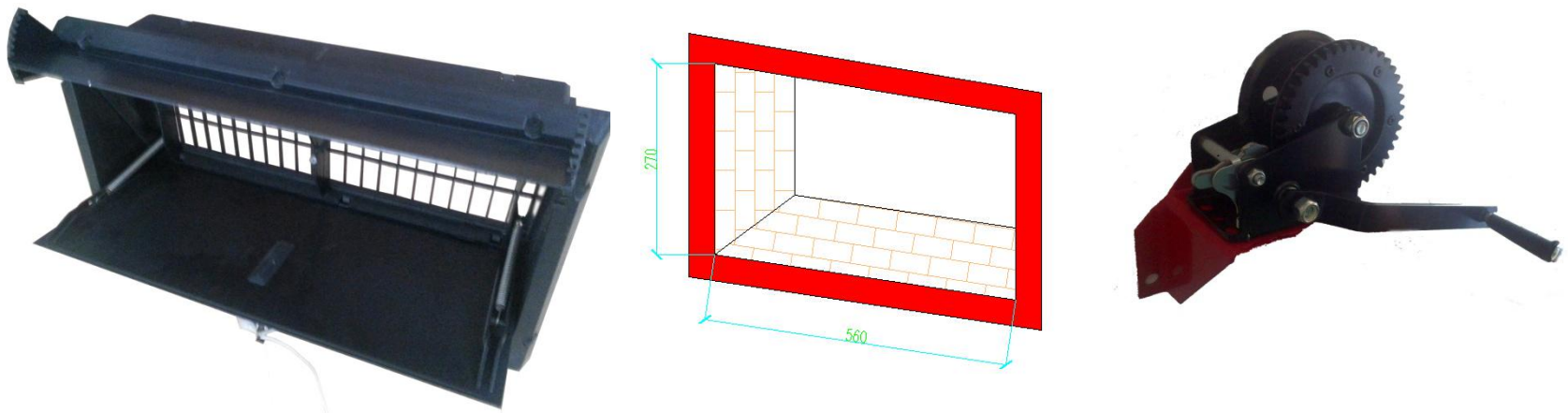
we can customize according customer need.

Feature:

- Used for livestock and industry
- Cooling pad paper made by corrugate fiber paper with special chemical treatment.
- The ingenious structure make the water well-distributed.
- Frame material is aluminum oxide, with corrosion resistant, and long service life

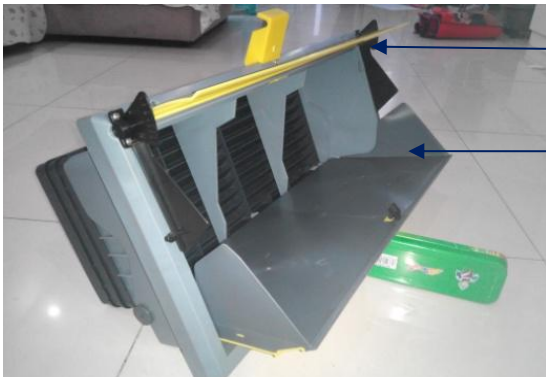


Side Wall Air Inlet System - Usual Dimension



Feature :

- High quality plastic , high durability , ageing resistant .
- 3 different opening angles could be setup , according to the distance to 36"fan and 24"fan .
- Resetting spring will close air inlet automatically to keep house as an enclosed space.
- Fresh air enters into the center of house from air inlet and then falls down to chicken back, which could avoid cold-stress..



Deflector: it can adjust the direction of the wind

Door: it can prevent the deformation without spring



Side Wall Inlet System - Extra Large



Feature :

- Dimension :1200*500mm
- PVC material
- Without distortion even in cold weather
- This kind of air intake is more useful in extreme large or wide house and cage system.
- Optimal insulation .

HENAN POUL TECH MACHINERY CO., LTD.